

# MOBILE PLANT

**CERTIFICATION**

**CLIENT NAME**

**Vehicle Make / Model**

**Risk Area**

**Classes of Fire**  
 Class A     Class B     Class E     Class D     Class F

**STREAM (m)**

**GROSS DIMENSIONS** (All in Meters)  
 Length:  x Width:  x Height:  **Enter VOLUME** =  m<sup>3</sup>

**Actual Leakage Measurement - M<sup>2</sup>** =  m<sup>2</sup>

**Leakage Allowance without additional Agent** =  m<sup>2</sup>

**GROSS Volume used for Calculation** =  m<sup>3</sup>

**PRIMARY AGENT DISCHARGE**  g

**Secondary Agent Discharge**  g

Model	L2 (mm)	L3 (mm)	Stream Length (mm)	Effective Agent Qty	Concentration		Primary Quantity	Secondary Quantity
					Primary	Secondary		
FP-0020	0	100	300	20	-	-	-	-
FP-0040	0	100	1200	40	-	-	-	-
FP-0080	0	100	2000	80	-	-	-	-
FP-0100	0	100	1000	100	-	-	-	-
FP-0200	100	300	1500	200	-	-	-	-
FP-0500	200	500	2500	500	2,000	-	4	-
FP-1200	200	1200	3500	1,200	-	-	-	-
FP-2000	200	1200	3500	2,000	-	-	-	-
FP-3000	700	1700	4000	3,000	-	-	-	-
FP-5700	800	1800	8000	5,700	-	-	-	-

Total Concentration	2,000	-
Required Concentration	1,679	-
% Required Concentration	119%	

- Design Calculation has been Confirmed
- FirePro Units have suitable STREAM length for Risk Area Coverage
- Leakage compensation made in Primary Discharge
- Additional HOLD time Required for the risk

## Aust.Std Design Notes

**CALCULATION OF VOLUME :** Calculation is based on Gross Volume with NO deductions for any Objects that occupy volume within the protected space. The concentration of Aerosol, and leakage allowances is based on Tests conducted in 2010 with Hughes Associates Europe. AS 5062.

**Minimum Extinguishing Factors (mef)**      **145 X 1.3 = 189**

- L2 is the thermal clearance required where the temperature of the discharge is less than 200° C
- L3 is the thermal clearance required where the temperature of the discharge is less than 75° C
- Vehicle Systems are compliant to AS 5062
- FirePro Generators should be aimed at the items likely to be involved in the fire.

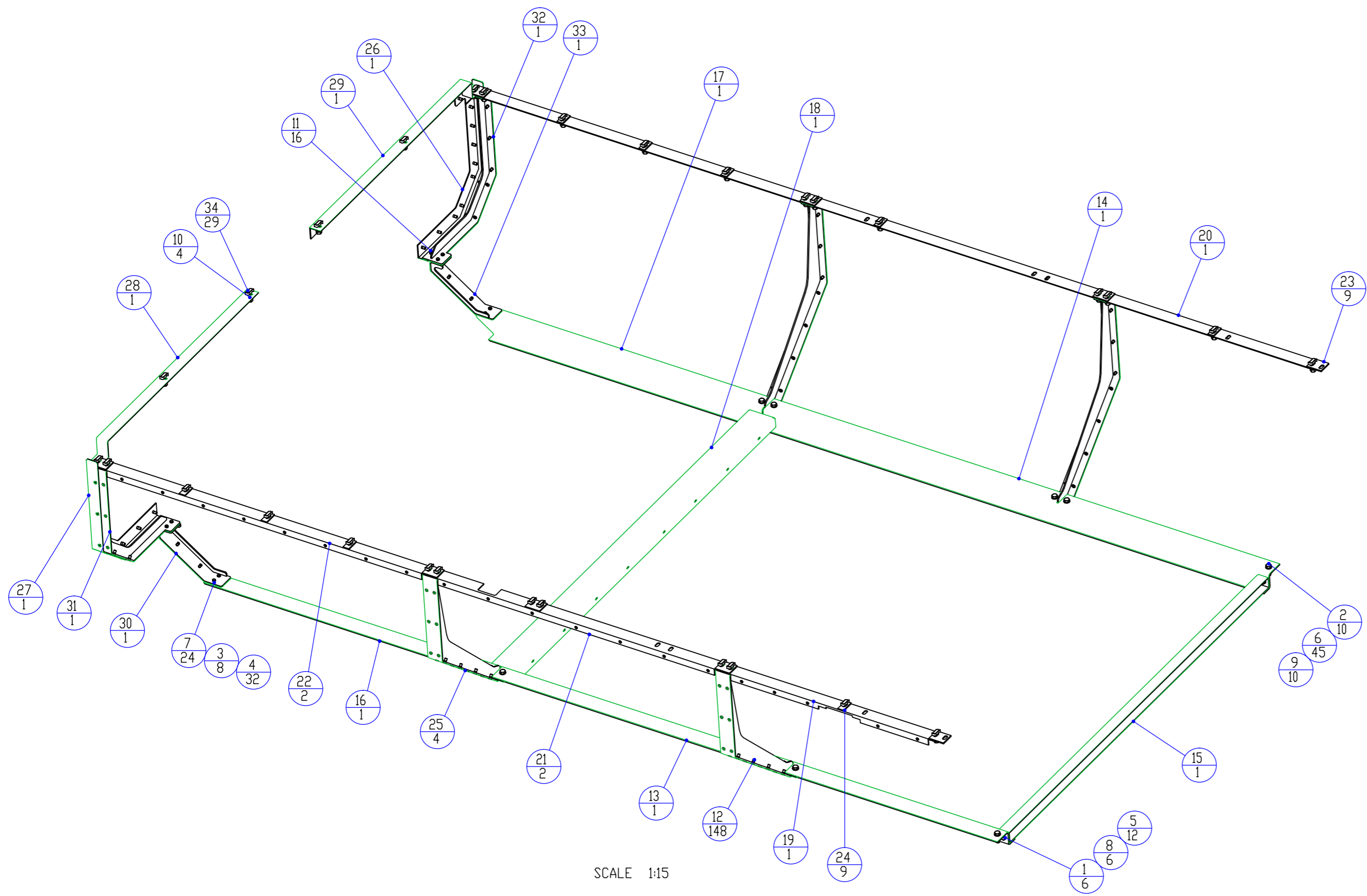
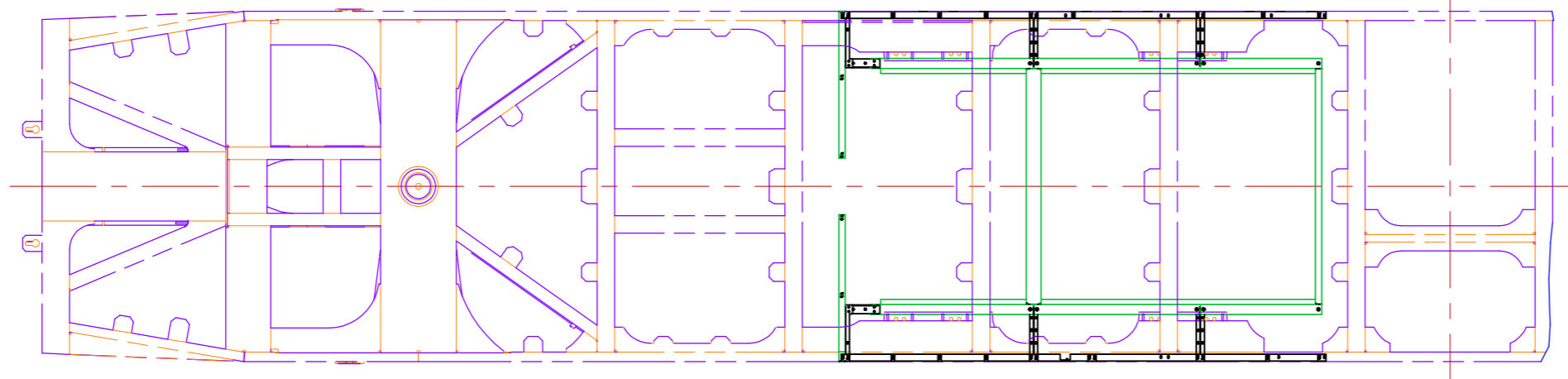
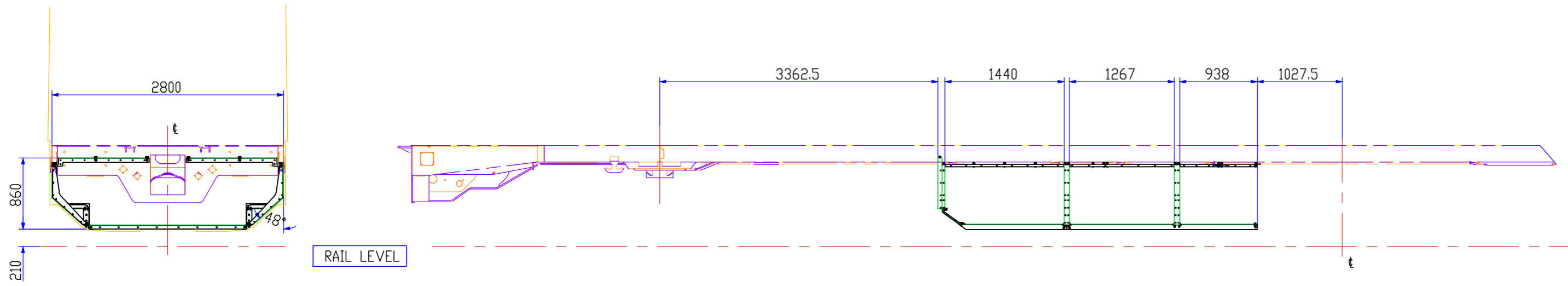
# APPROVED

Prepared By:

PM

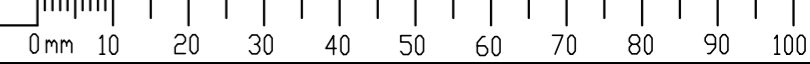
Company

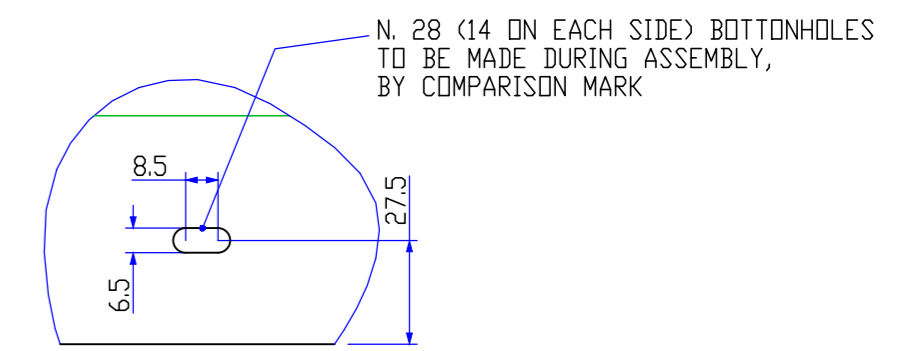
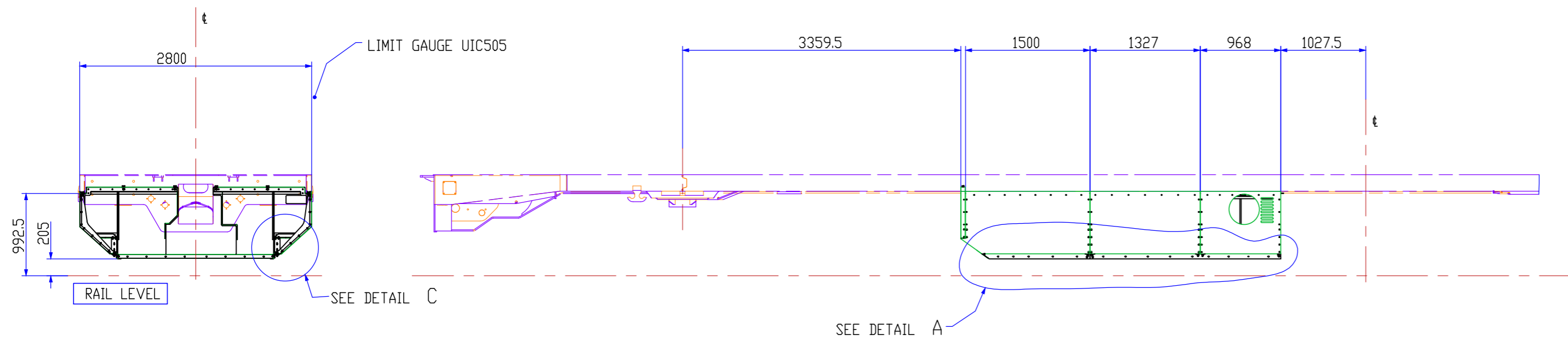
FSE



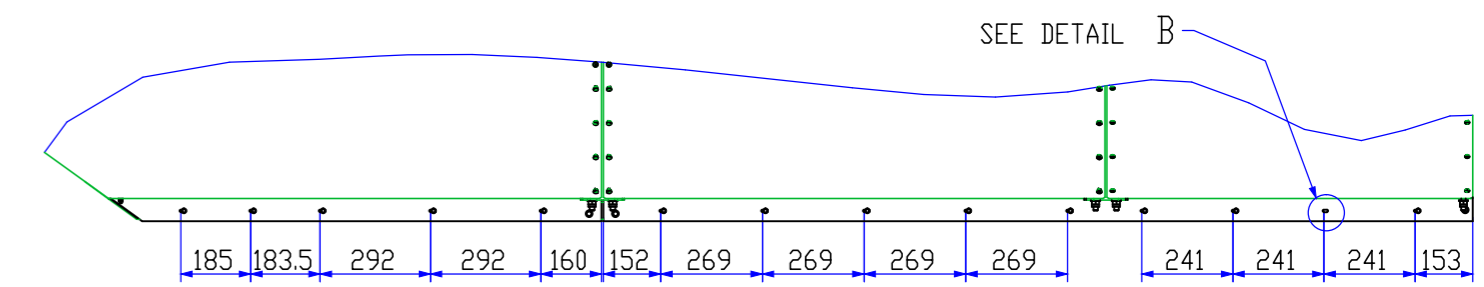
#	Codice/Code	Descrizione / Description	Q.tà Qty	Peso Weight	Materiale / Material
34	A2380	VITE PER GUIDA HALFEN HS 40/22 M12X40	HALFEN T-HEAD BOLT HS 40/22	29	0,0 CLASS 8.8
33	3C05J410900	ASSIEME SALDATO	WELDED ASSEMBLY	1	1,3
32	3C05J347000	ASSIEME SALDATO	WELDED ASSEMBLY	1	3,7
31	3C05J346700	ASSIEME SALDATO	WELDED ASSEMBLY	1	3,7
30	3C05J346400	ASSIEME SALDATO	WELDED ASSEMBLY	1	1,3
29	3C05J314200	ASSIEME SALDATO	WELDED ASSEMBLY	1	2,8
28	3C05J314100	ASSIEME SALDATO	WELDED ASSEMBLY	1	2,8
27	3C05J314000	ASSIEME SALDATO	WELDED ASSEMBLY	1	2,1
26	3C05J313900	ASSIEME SALDATO	WELDED ASSEMBLY	1	2,1
25	3C05J312200	MONTEANTE	UPRIGHT	4	4,7
24	2C30J411100	SPESSORE	SHIM (1 slot plate)	9	0,0 AL 6082 T6
23	2C30J363300	SPESSORE	SHIM (2 slots plate)	9	0,0 AL 6082 T6
22	2C30J312000	PROFILATO AD L	ANGLE BAR	2	2,8 S355 J0
21	2C30J311900	PROFILATO AD L	ANGLE BAR	2	4,0 S355 J0
20	2C30J311800	PROFILATO AD L	ANGLE BAR	1	1,8 S355 J0
19	2C30J311700	PROFILATO AD L	ANGLE BAR	1	1,7 S355 J0
18	2C30J311600	LAMIERA PRESSOPIEGATA	BENDE SHEET	1	8,9 S355 J0
17	2C30J311500	LAMIERA PRESSOPIEGATA	BENDE SHEET	1	8,6 S355 J0
16	2C30J311400	LAMIERA PRESSOPIEGATA	BENDE SHEET	1	8,6 S355 J0
15	2C30J311300	LAMIERA PRESSOPIEGATA	BENDE SHEET	1	6,2 S355 J0
14	2C30J311200	LAMIERA PRESSOPIEGATA	BENDE SHEET	1	15,6 S355 J0
13	2C30J311100	LAMIERA PRESSOPIEGATA	BENDE SCHEET	1	15,6 S355 J0
12	1C38F753900	INSER. FIL.SV.ZIGR. M6x19 9202-Z LUNGO	DEFORM.THR.INSERT UNI9202-Z (long) M6x19	148	0,0
11	26936	VITE TSPEI UNI5933 ZN M6X25	HEX.SDC. COUNTH. SCREW UNI5933 ZN M6X25	16	0,0
10	19013	ROSETTA UNI6593 R40 ZN M12 NDRMALE	WIDE FLAT WASHER UNI6593 R40 ZN M12	4	0,0 CLASS R40
9	13132	DADO AUTOBLOCCANTE UNI7473 ZN M12	NYLON INS. HEX LOCK NUT UNI7473 ZN M12	10	0,0 CLASS 8G
8	13130	DADO AUTOBLOCCANTE UNI7473 ZN M8	NYLON INS. HEX LOCK NUT UNI7473 ZN M8	6	0,0 CLASS 8G
7	13129	DADO AUTOBLOCCANTE UNI7473 ZN M6	NYLON INS. HEX LOCK NUT UNI7473 ZN M6	24	0,0 CLASS 8G
6	12970	ROSETTA UNI6592 R40 ZN M12	FLAT WASHER UNI6592 R40 ZN M12	45	0,0 CLASS R40
5	12968	ROSETTA UNI6592 R40 ZN M8	FLAT WASHER UNI6592 R40 ZN M8	12	0,0 CLASS R40
4	12966	ROSETTA UNI6592 R40 ZN M6	FLAT WASHER UNI6592 R40 ZN M6	32	0,0 CLASS R40
3	10470	VITE TE UNI5739 ZN M6X25	HEXAGON HEAD SCREW UNI5739 ZN M6X25	8	0,0 CLASS 8.8
2	08611	VITE TE UNI5737 ZN M12X40	PART.THR. HEXHEAD SCREW UNI5737 ZN M12X40	10	0,1
1	08578	VITE TE UNI5737 ZN M8X30	PART.THR. HEXHEAD SCREW UNI5737 ZN M8X30	6	0,1

Elenco delle revisioni Revision list	1	PRIMA EMISSIONE / FIRST EMISSION	26-Sep-12	Materiale/Material
	Rev.	Modifiche Amendments	Data Date	Trattamenti/Treatments
	Smussi / Chamfers		0,2 - 0,8	
	Rugosità sup./Surf. roughness (UNI EN ISO 1302)		✓	
Tolleranza /Tolerance (UNI EN 22768-1/2)		c	L	
		Drawn: FAVIA Designed: FAVIA Drg Check: CALDERARO Design chek: CALDERARO Approved: VALENTINO	Peso/Weight kg 106,3	Scala/Scale 1:50
Design accepted * For use by RailCorp		* RailCorp signatures on this document designate only that the content appears to be consistent with RailCorp's requirements. Responsibility for the design rests with the designers.		This drawing and the information contained therein have been created for a particular purpose and client. This is protected by copyright. You may not reproduce any of it in any form without the written permission of Rail Corporation New South Wales. If you do, you may have to pay damages to RailCorp or you may be prosecuted.
Signature: _____ Title: _____ Date: _____		TRANSPORT SYDNEY TRAINS		MECHANISED TRACK PATROL VEHICLE - MER MEC 800 RC MTPV01 and MTPV02 VEHICLE BODY - HULLS P758 HULLS FRAME
FILE No. 4C28J312500		SHEET 1 OF 2		A2
STATUS: APPROVED - AS BUILT		FL0174081		A

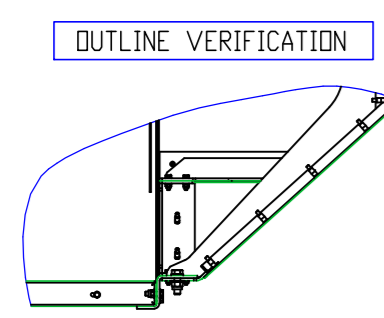




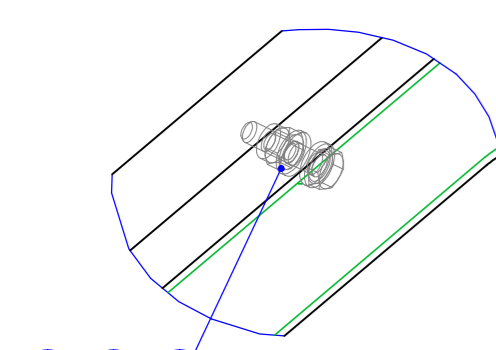
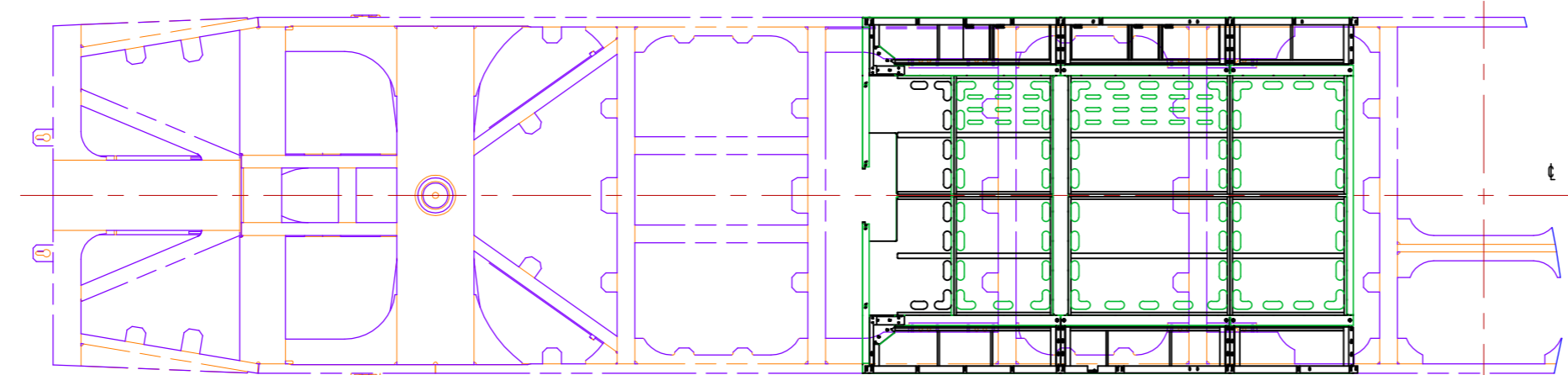
DETAIL B  
SCALE 1:2



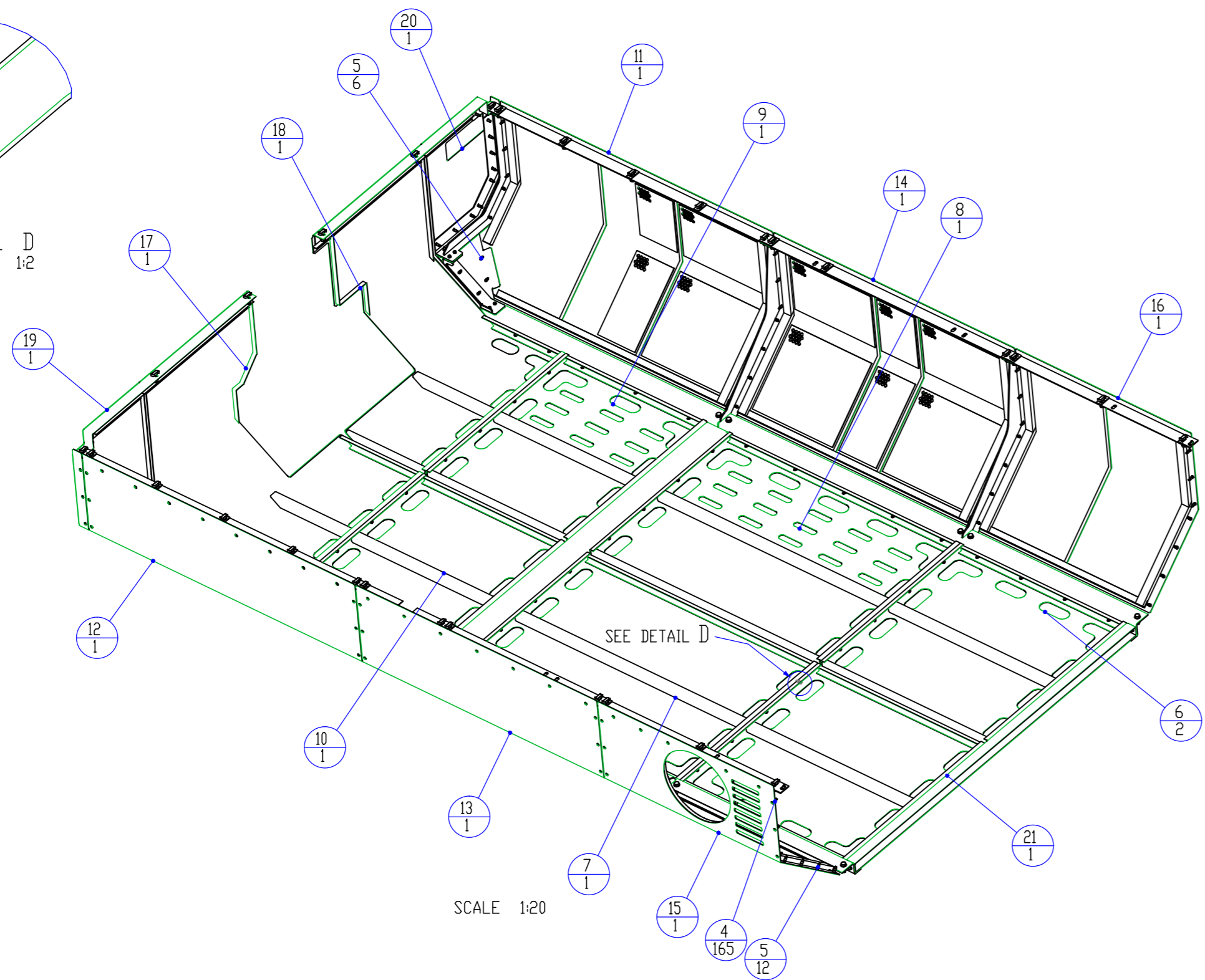
DETAIL A  
SCALE 1:20



DETAIL C  
SCALE 1:15



DETAIL D  
SCALE 1:2



21	4C28J312500	TELAIO CARENE P758	P758 HULLS FRAME	1	106.3
20	3C05J314400	ASSIEME SALDATO	WELDED ASSEMBLY	1	2.7
19	3C05J314300	ASSIEME SALDATO	WELDED ASSEMBLY	1	2.9
18	3C05J313800	ASSIEME SALDATO	WELDED ASSEMBLY	1	9.3
17	3C05J313700	PROTEZIONE SERBATOIO	TANK SHIELD	1	10.0
16	3C05J313600	ASSIEME SALDATO	WELDED ASSEMBLY	1	9.1
15	3C05J313500	ASSIEME SALDATO	WELDED ASSEMBLY	1	7.9
14	3C05J313400	ASSIEME SALDATO	WELDED ASSEMBLY	1	12.7
13	3C05J313300	ASSIEME SALDATO	WELDED ASSEMBLY	1	12.2
12	3C05J313200	ASSIEME SALDATO	WELDED ASSEMBLY	1	13.4
11	3C05J313100	ASSIEME SALDATO	WELDED ASSEMBLY	1	13.8
10	3C05J313000	ASSIEME SALDATO	WELDED ASSEMBLY	1	7.7
9	3C05J312900	ASSIEME SALDATO	WELDED ASSEMBLY	1	7.4
8	3C05J312800	ASSIEME SALDATO	WELDED ASSEMBLY	1	11.9
7	3C05J312700	ASSIEME SALDATO	WELDED ASSEMBLY	1	12.3
6	3C05J312600	ASSIEME SALDATO	WELDED ASSEMBLY	2	9.0
5	1C38F753900	INSER. FIL.SV.ZIGR. M6x19 9202-Z LUNGO	DEFORM.THR.INSERT UNI9202-Z (long) M6x19	18	0.0
4	26937	VITE TSPEI UNI5933 ZN M6X30	HEX.SDC. CDUNT.H. SCREW UNI5933 ZN M6X30	165	0.0
3	13129	DADO AUTOBLOCCANTE UNI7473 ZN M6	NYLON INS. HEX LOCK NUT UNI7473 ZN M6	68	0.0 CLASS 8G
2	12966	ROSETTA UNI6592 R40 ZN M6	FLAT WASHER UNI6592 R40 ZN M6	136	0.0 CLASS R40
1	10470	VITE TE UNI5739 ZN M6X25	HEXAGON HEAD SCREW UNI5739 ZN M6X25	68	0.0 CLASS 8.8

#	Codice/Code	Descrizione / Description	Q.tà Qty	Peso Weight	Materiale / Material
					Smussi / Chamfers 0.2 - 0.8
					Rugosità sup./Surf. roughness (UNI EN ISO 1302) ✓
					Tolleranza /Tolerance (UNI EN 22768-1/2) c L
					Materiale/Material
1	PRIMA EMISSIONE / FIRST EMISSION			27-Sep-12	
Rev.	Modifiche Amendments			Data Date	Trattamenti/Treatments

Drawn: FAVIA  
Designed: FAVIA  
Drg Check: CALDERARD  
Design chek: CALDERARD  
Approved: VALENTINO

Signature: \_\_\_\_\_  
Title: \_\_\_\_\_  
Date: \_\_\_\_\_

Peso/Weight  
kg 275,8

Scala/Scale 1:10

This drawing and the information contained therein have been created for a particular purpose and client. This is protected by copyright. You may not reproduce any of it in any form without the written permission of Rail Corporation New South Wales. If you do, you may have to pay damages to RailCorp or you may be prosecuted.

MECHANISED TRACK PATROL VEHICLE - MER MEC 800 RC  
MTPV01 and MTPV02  
VEHICLE BODY - HULLS  
P758 HULL - HOLES DETAIL

FILE No. 4C28J363200 SHEET 1 OF 2 A2  
STATUS: APPROVED - AS BUILT  
FL0174085 A