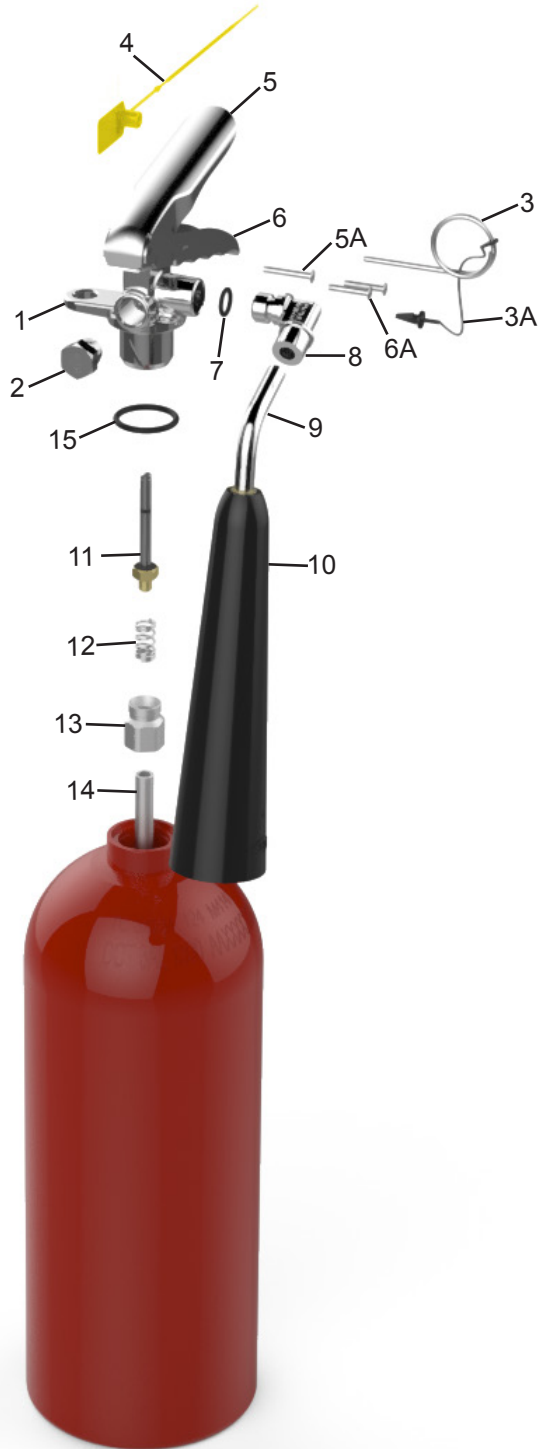




PARTS LIST for 2½ / 5 lb. Carbon Dioxide Extinguisher Model

- 320 - 2 1/2 lb.
- 320NM - 2 1/2 lb.
- 321 - 2 1/2 lb.
- 321M - 2 1/2 lb.
- 322 - 5 lb.
- 322NM - 5 lb.

NM - Non Magnetic
M - Military



ITEM NO.	PART NO.	DESCRIPTION
1	03090	Valve Assembly - 322, (Does not include elbow or downtube)
	22403	Valve Assembly - 320
	22455	Valve Assembly - 321M
2	04000	Safety Disc, Gasket and Nut Assembly - 320, 322
	22895	Safety Disc, Gasket and Nut Assembly - 321M
3	00160	Ring Pin, Stainless Steel - 322
	06901	Ring Pin, Stainless Steel Non-Magnetic - 320NM, 322NM
	16268	Ring Pin, Stainless Steel (Small) - 320, 321, 321M
3A	00532	Chain (Nylon) for Ring Pin
4	01387	Lock Wire Seal (Yellow) - ALL
5	07762	Lever & Rivet - 322
	23076	Lever & Rivet - 320, 321M
5A	01563	Rivet Only for Lever
	09020	Handle & Rivets - 322
6	23077	Handle & Rivets - 320, 321M
	01564	Rivet Only for Handle (2 Required)
7	05689	O-Ring for Elbow
8	02735	Elbow with O-Ring
	01769	Discharge Tube - 322
9	22582	Discharge Tube - 320, 321M
	01772	Horn - 322
10	22400	Horn - 320, 321M
	01539	Valve Stem Assembly
12	00501	Spring
13	00503	Retainer
14	00533	Downtube - 322
	22443	Downtube - 320, 321M
15	01124	Collar O-Ring - 1 1/8"

All Valve Assemblies include Valve Body, Valve Stem Assembly, Spring, Retainer, Safety Disc, Lever and Handle



PARTS LIST

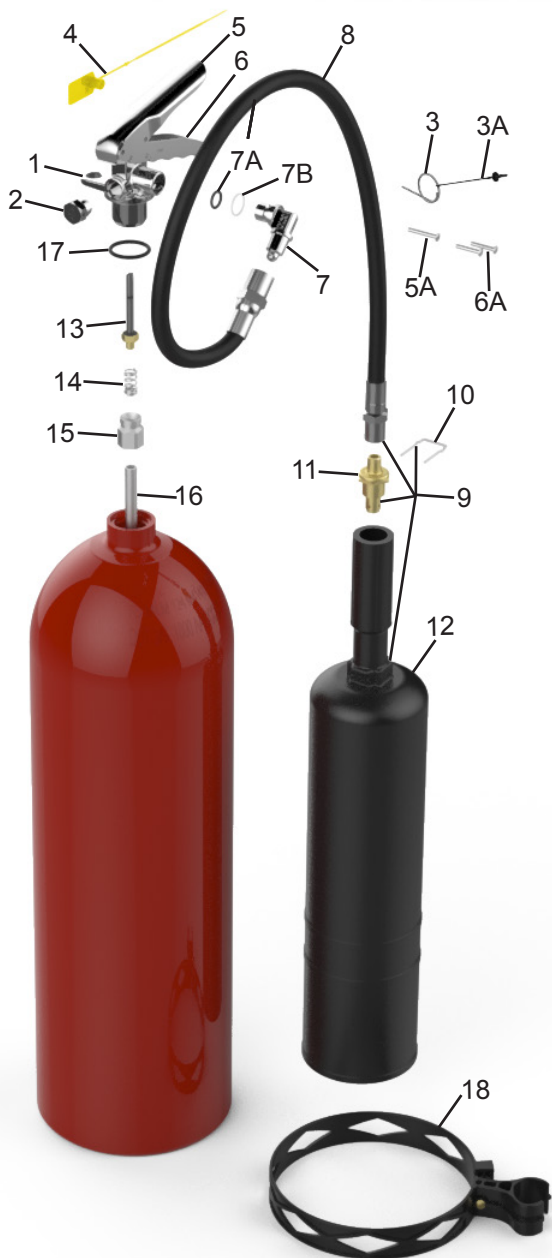
for

10 - 20 lb. Carbon Dioxide Extinguisher Models

330 - 10 lb.

331 - 15 lb.

332 - 20 lb.



ITEM NO.	PART NO.	DESCRIPTION
1	03090	Valve Assembly (Does not include elbow or downtube)
2	04000	Safety Disc, Gasket and Nut Assembly
3	00160	Ring Pin, Stainless Steel
	06901	Ring Pin, Stainless Steel Non Magnetic
3A	00532	Chain (Nylon) for Ring Pin
4	01387	Lock Wire Seal (Yellow) - ALL
5	07762	Lever & Rivet
5A	01563	Rivet Only for Lever
6	09020	Handle & Rivets
6A	01564	Rivet Only for Handle (2 Required)
7	02309	Elbow with O-Ring and Spacer
7A	05689	O-Ring for Elbow
7B	02216	Nylon Spacer for Elbow
8	01776	Hose Assembly - 330, 331, 332
9	01782	Hose & Horn Assembly - 330
	01705	Hose & Horn Assembly - 331, 332
10	00594	U-Pin
11	01777	Nozzle
12	00572	Horn - 330
	00593	Horn - 331, 332
13	01539	Valve Stem Assembly
14	00501	Spring
15	00503	Retainer
16	00564	Downtube - 330
	00589	Downtube - 331, 332
17	01124	Collar O-Ring - 1 1/8"
18	20570	Strap & Clip - 330, 331
	20571	Strap & Clip - 332

All Valve Assemblies include Valve Body, Stem Assembly, Spring, Retainer, Safety Disc, Lever and Handle
*** Not Shown**